








## 7. Level 2 Repair

### 7-1. Pre-requisite

	
<b>Tweezers / Disass'y Stick / Screw Driver</b>	<b>Anti-static Gloves</b>
	
<b>OCTA Disassembly Holder</b>	<b>Anti-static Mat</b>
	
<b>Acryl Jig Rework Form</b>	<b>Glass Absorbers (2ea)</b>
	
<b>Tape Rework Form</b>	<b>Mobile Dryer</b>

## 7-2. Parts which must be changed after repair

<b>OCTA Form Tape</b>	 A rectangular, light brown, textured tape with a black border, mounted on a green circuit board.
<b>Bracket Cu Tape</b>	 A rectangular, dark brown, textured tape with a black border, mounted on a green circuit board.
<b>Touch Key Top Tape</b>	 A rectangular, light gray, textured tape with a black border, mounted on a green circuit board.

### 7-3. Disassembly

1

- 1) Put the device in the chamber for 5~10 minutes under 70~80 °C.
- 2) Detach the OCTA with Disass'y JIG.



#### ※ Caution

- 1) Be care of scratch

2

- 1) Unscrew 11 points

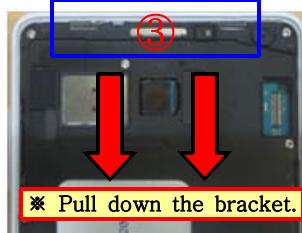


#### ※ Caution

- Be careful not to Damage

3

- 1) Detach the 2 point hooks in order.
- 2) Disassemble the bracket.



※ Pull down the bracket.

#### ※ Caution

- 1) Be Careful not to Damage of PBA  
(Must remove the 2nd hook.)

4

- 1) Detach the Bracket and REAR



#### ※ Caution

- Be careful not to Damage

5

- 1) Unscrew 2 points
- 2) Detach Connector and Coaxial Cable from PBA



※ Caution  
Be careful not to Damage

6

- 1) Detach the PBA from bottom REAR



※ Caution  
Be careful not to Damage

7

- 1) Detach Main& Sub camera on PBA.



※ Caution  
Be careful not to Damage

8

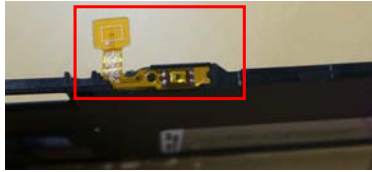
- Detach the Receiver, Speaker, Coaxial Cable and Battery



※ Caution  
Be careful not to Damage

9

1)Detach Sub PBA and Power key



※ Caution  
Be careful not to Damage

## 7-4. assembly

1

1) Assemble Sub PBA and Power key



※ Caution  
Be careful not to Damage

2

1) Assemble the Coaxial Cable and RCV, Speaker, Battery.



※ Caution

3

1) Attach Main and Sub Camera on PBA



※ Caution  
Be careful not to Damage

4

1) Assemble PBA on Bracket  
2) Assemble lower Sub PBA and Main PBA



※ Caution  
Be careful not to Damage



5

- 1) Assemble Connector on the PBA Assy
- 2) Assemble Coaxial Cable



※ Caution

6

- 1) Tighten a screw  
 $1.2 \pm 0.1 \text{ Kg/cm}^2$

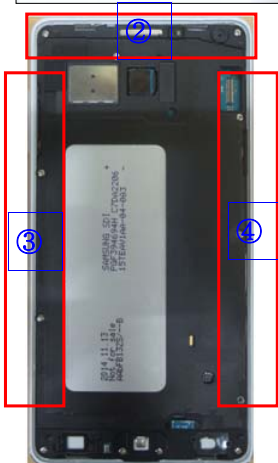


※ Caution

Torque :  $1.2 \pm 0.1 \text{ Kg/cm}^2$   
Screw : 1.4 \* 2.0(6001-001695, Black)

7

- 1) Assemble the PBA Assy to Rear in order.



※ Caution

8

- 1) Tighten screw the 11 point  
 $1.3 \pm 0.1 \text{ Kg/cm}^2$



※ Caution

Torque :  $1.3 \pm 0.1 \text{ Kg/cm}^2$   
Screw : 1.4 \* 2.5(6001-003193, Silver)

9

1) Attach OCTA



※ Caution

10

1) Do pre-function test



※ Caution

11

1) Press the set using jig



※ Caution

- Pressure : 1N
- Time: 1 minute